



CADprofi network license

We make effort to ensure that information contained in this user manual is accurate and up to date. However, if you see any mistakes – please let us know, we appreciate any suggestions.

We reserve the right to make changes in the program. Therefore, there may be slight discrepancies between this manual and the user program version.

Trademarks

Products listed in this user manual are used only for identification purposes and in most cases are registered trademarks and are protected by law.

Publication

© CADprofi® – December 2013

All rights reserved. Unauthorized reproduction of this publication in whole form or in fragments is strictly prohibited.

Introduction

Network license allows user to use the **CADprofi** software in a specific **LAN** network (Local Area Network). With this license **CADprofi** can be installed on any number of computers that are used in a specified network, while the number of ordered licenses defines the number of users that can use the program simultaneously.

Information and technical conditions

After installing the program on one of the workstations, user has to activate the network license. During activation in a selected network folder the license file will be created. On all other workstations user has to specify the path to that network folder in which the license file is located.

Notice:

- * Workstations, that use the license must have rights to save in the selected folder.*
- * On each workstation, the license path must be defined in an identical way. It is not possible to use letters of mapped drives.*
- * Examples of correct network paths:*
 - with server name: \\ServerName\Share\Folder*
 - with server IP address: \\192.168.1.17\Share\Folder*
- * Network folder, that was specified during activation, can be later changed only in a request sent to the producer of the program (the licensor).*
- * At least one of the workstations must be connected with the internet in order to periodically, automatically refresh the data in the license file.*

Using the network licenses

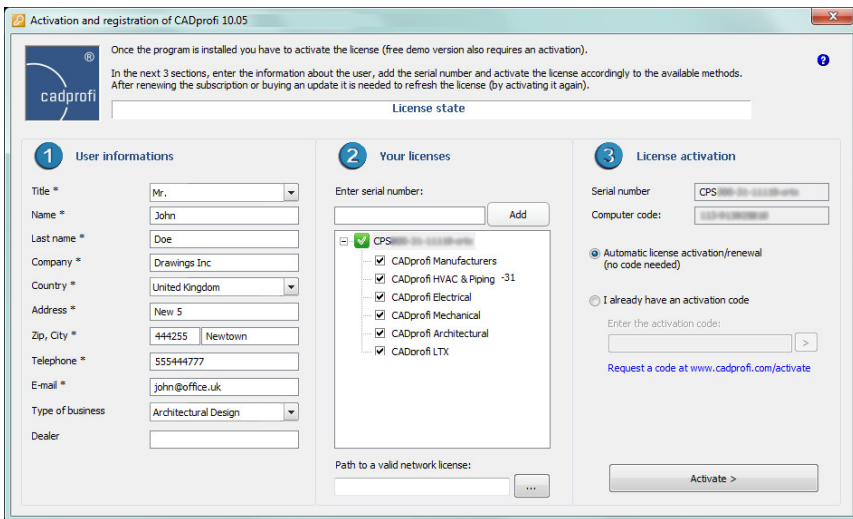
Each workstation gets whole seat from the given network license. If a network license is for example for 5 seats and contains both **HVAC & Piping** and **Electrical** modules, then each workstation will get both modules, allowing to work 5 users simultaneously. In order to manage separately with each of the modules, user should order separate network licenses for each branch.

Network licenses must be uniform. It means that a given network license can't contain various number of **CADprofi** branch modules. Buying **CADprofi Suite** network license on for example 2 seats, means that only 2 users can work simultaneously. What is more, **CADprofi Suite** license can't be divided on separate modules as it is a single product.

Registering and activating the license

After installing, user has to perform the process of activating the license. The recommended method is the **On-line license activation**.

In case of network license, the activation process should be performed only on one workstation. During activation, a **network license file** will be created in a selected folder, which will distribute rights between users, accordingly to which one runs the program first. After the users have exhausted the pool of available licenses, on the following seats, the registration window will display the **All network license seats are used** message. User, who received rights to use the program has the possibility to return them, so other users can receive them. The **Return license** option in the registration window is used for that.



Dialog window used for registration and license activation

Dialog window contains:

User data – data required for user registration.

Enter serial number – serial number of your license. This number can be found in the **CADprofi** package or in the email that will be sent after program purchase.

Path to a valid network license – field that contains a path to the network license file, that was created during activation.

License activation – information and commands necessary to activate the license.

Computer code – your computer's unique code required to identify your license. This number is generated automatically.

Registering and activating the license

Activate > – button that allows to automatically update or renew the license from the **CADprofi** server.

Automatic license activation/renewal – this option allows to activate the rights by connecting to the **CADprofi** license server.

I already have an activation code – this option allows to enter the activation code that was previously downloaded from the **CADprofi** website. This option will be unlocked after failed automatic activation attempt.

Request a code at: – a link to a website that is used to activate the **CADprofi** license.

▼ Procedures

Activating the network license

1. Run the CAD program, which was configured with **CADprofi** application and wait until the **Program Registration** window will be displayed. Registration window can also be displayed by clicking the **CADprofi - About** command.
2. Fill out user data in order to register the program.
3. Enter the **CADprofi network license Serial Number** and click **Add**.
4. In the **Path to a valid network license**, specify the location, where the network license file will be created for the specified serial number.
5. Click the **Activate >** button in order to automatically obtain the **Activation code** and **register the user**. This activation is a once a time process and can be done on any computer that is in the network.
6. Enter the same **CADprofi network license Serial Number** on all work stations and provide the same **Path to a valid network license**. Wait till the application will download all the necessary permissions.

Notice

The network license path just as the computer number is involved in activating the license, therefore it must be the same on all work stations that use the same license file. It is recommended to use the IP address in the path, instead than for example a mapped network drive.

Returning the network license

1. In the program from the menu or the **CADprofi** toolbar select the **CADprofi - About** command and then open the **Program registration** window.
2. Click the right mouse button on the **CADprofi network license Serial Number** that is visible in **Your licenses** section.
3. In the opened menu select the **Return license** option in order to temporarily disable **CADprofi** license on a given work station. Returning the license will allow other users to use the application.

Hint

This option allows to temporarily disable the license, restarting the CAD program will allow to download the permissions and restore the application, so it will work again.

In order to disable the CADprofi program with the network license for a longer period of time, it is recommended to delete the serial number or to separate CADprofi from the CAD program by clicking the Restore CAD program, which is available in the CADprofi configuration window.

Notice

If the customer possesses several serial numbers from CADprofi programs then the activation procedure must be repeated for each serial number.

If you purchase the program update or you renew the subscription it is necessary to reactivate the license in order to retrieve new license rights.